

Mapping Shoreland Zoning



March 11, 2010

Stephenie MacLagan, Maine DEP

Michael White, Dirigo Spatial Systems, Inc.

Information



Contact Information:

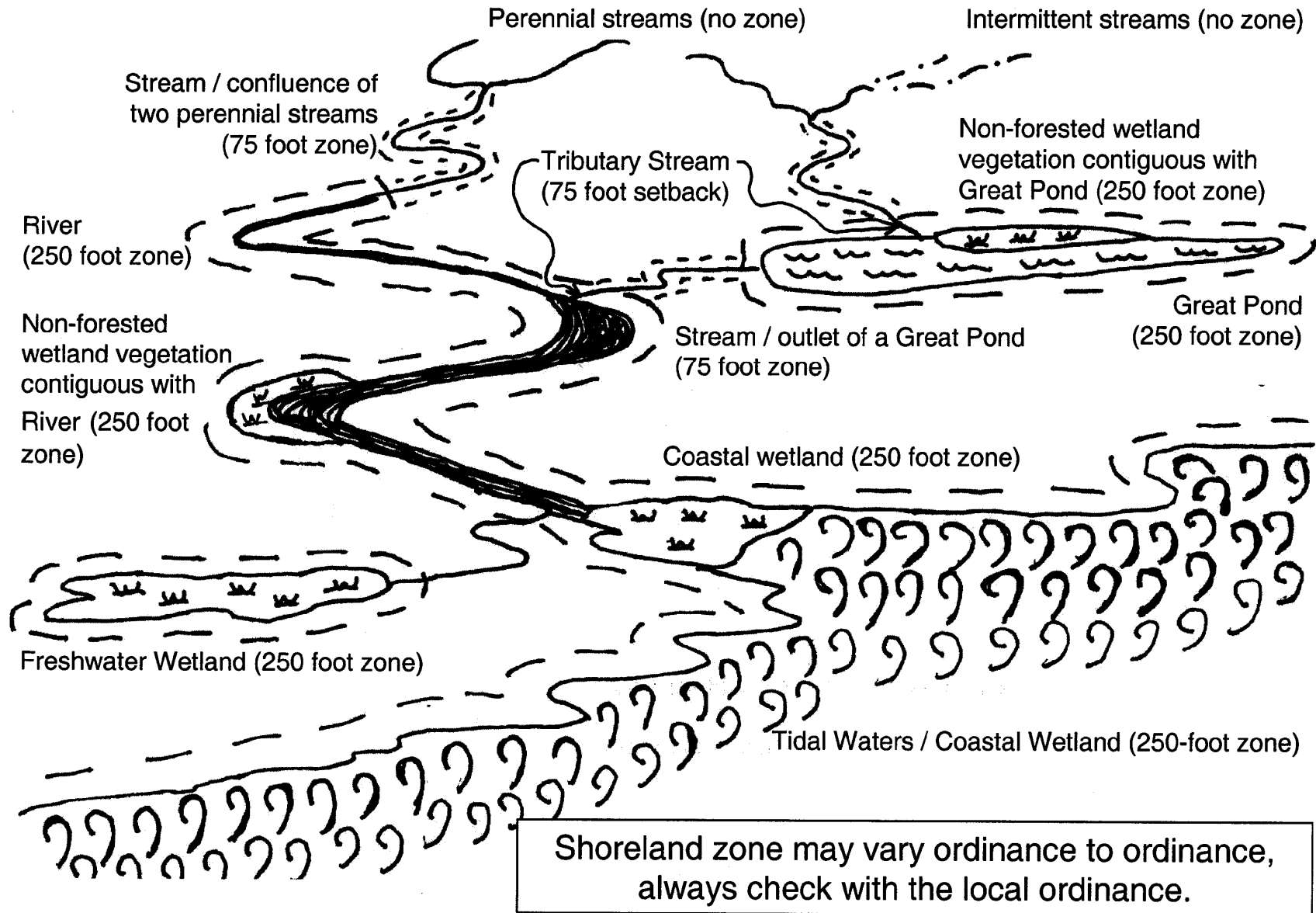
Stephenie: stephenie.maclagan@maine.gov

Mike: mike@dirigospatial.com

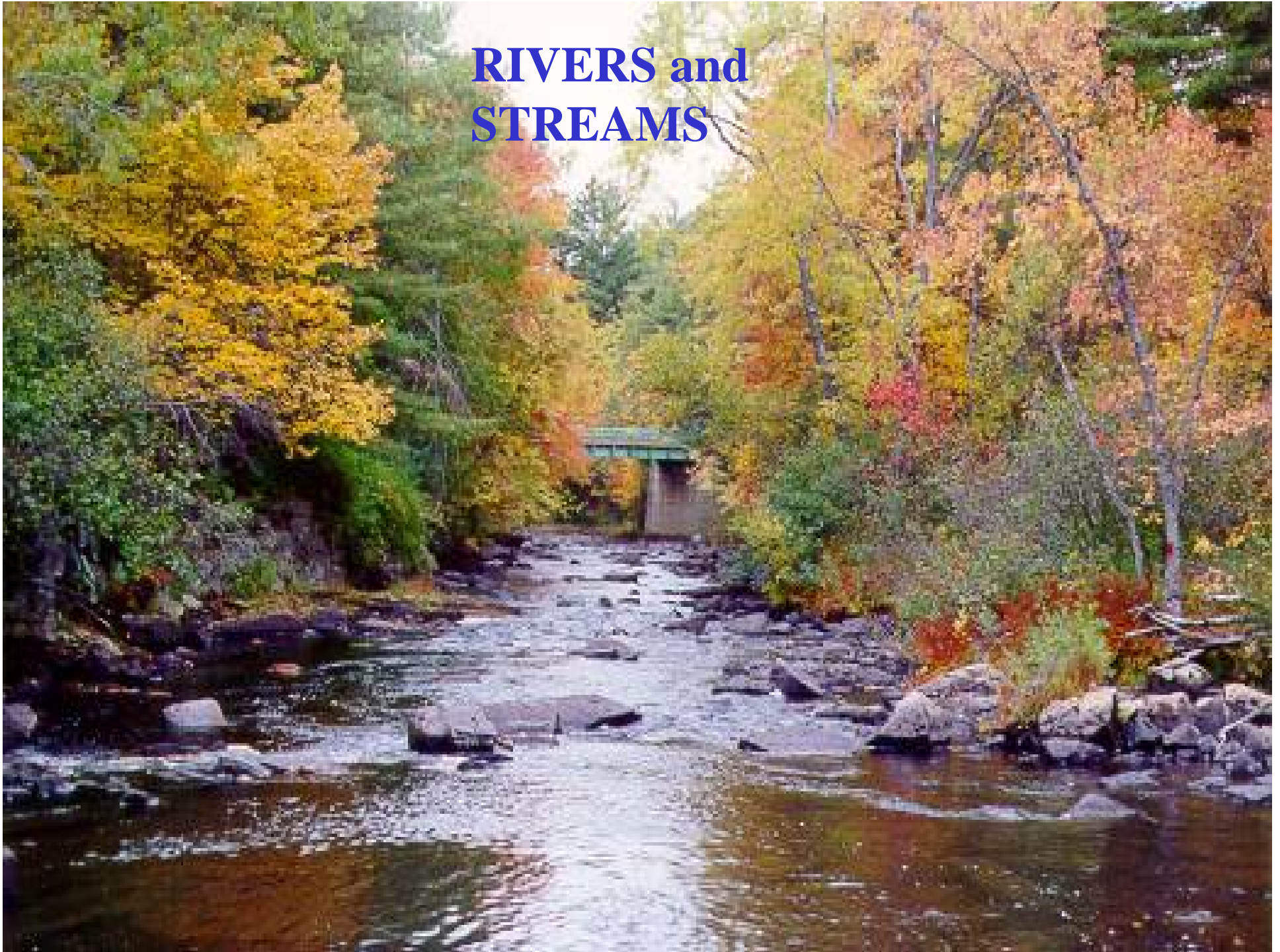
Shoreland Zoning Ordinance Guidelines:

<http://www.maine.gov/dep/blwq/docstand/zpage.htm#rule> or email Stephenie

The Shoreland Zone



RIVERS and STREAMS



River vs Stream

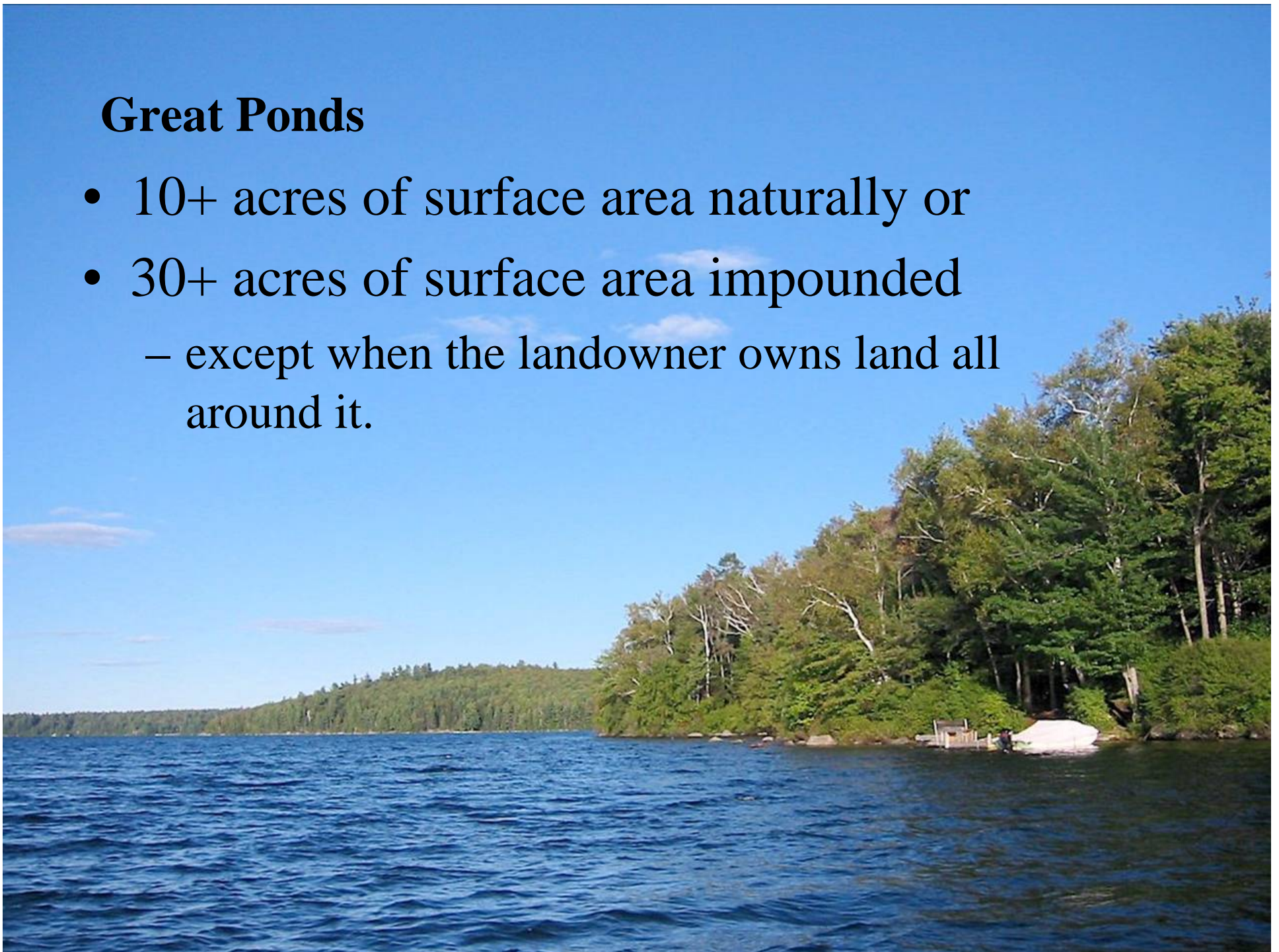


Regardless of what the body of water is named:

- A river is a body of water at the point where it drains 25 square miles to its mouth.
- A stream is the outlet of a great pond or the confluence of 2 perennial streams to the shoreland zone of another water body or wetland or where it becomes a river.
- Brook is not a defined term, and if shoreland zoned would have to meet the definition of wetland, river or stream.

Great Ponds

- 10+ acres of surface area naturally or
- 30+ acres of surface area impounded
 - except when the landowner owns land all around it.



FRESHWATER WETLANDS

10+ acres of wetland area that is not forested.



Coastal Wetland

- All areas with salt tolerant vegetation
- All areas subject to the highest annual tide
 - may include rocky and sandy coasts



Getting MEGIS Data



Resources (base layers)

- Great Ponds and rivers
- Freshwater Wetlands
- Coastal Wetlands
- Streams
- Orthoimagery

MEGIS layers

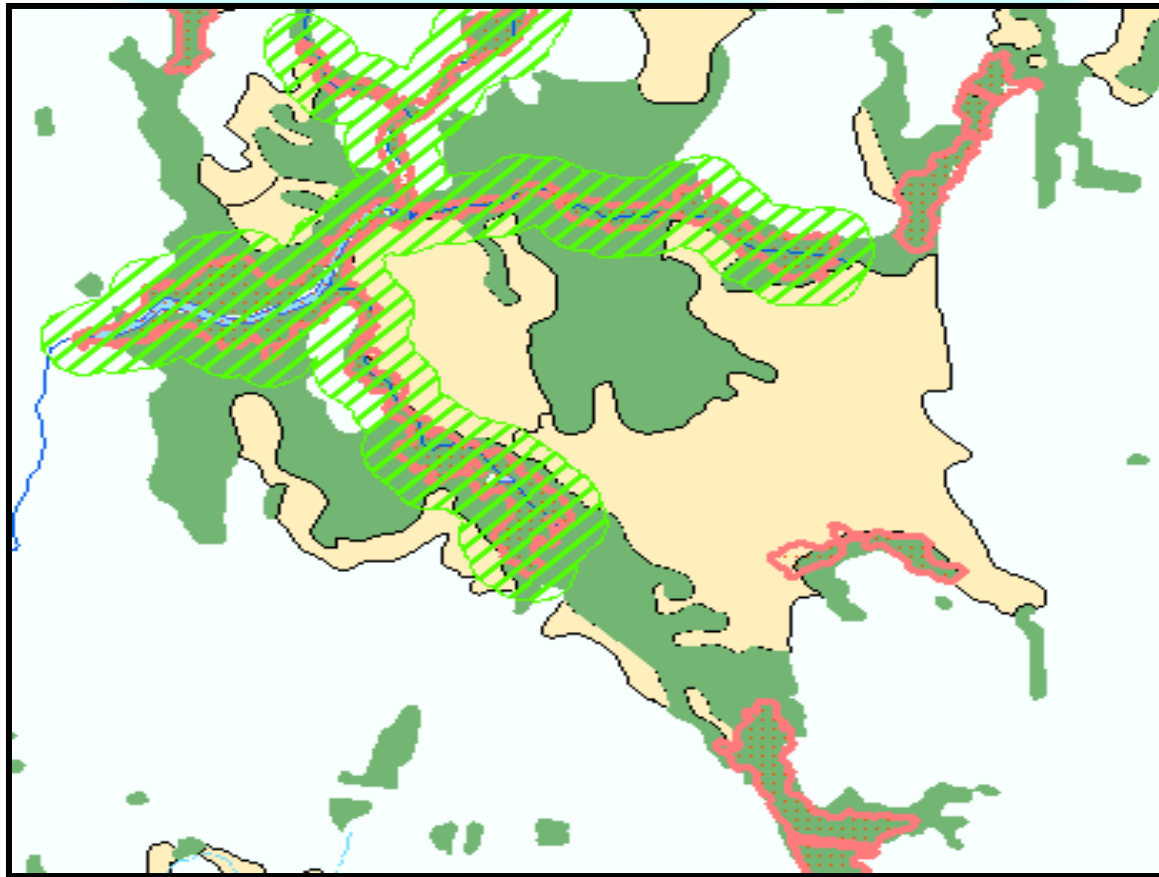
- WQPONDS, WQRIVERS, WQSTREAM. includes all ponds, rivers, streams, and lesser water bodies.
- NWI. Includes all wetland areas, including forested and smaller wetlands.
- WQ* and NWI.
- WQSTREAM. But, further selection is required.

Creating Base Layers from Data

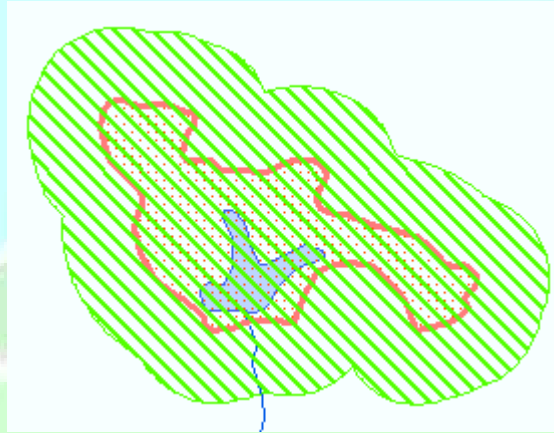


- Selecting features from current zoning map
- Great ponds: acreage in attribute table
- Streams, select perennial streams
- Rivers: can be confirmed from the List of Rivers Subjected to Shorelands Zoning and Subdivision Controls (contact Stephenie if unsure)
- Freshwater wetlands...

Freshwater Wetland



IWWH Wetlands



MEGIS layers:

- IWWH_WETLAND_FOOTPRINTS
- SHOREZONE_IWWH

Uses:

- Part of freshwater wetland base (there may be other parts of the wetland not rated moderate/high value)
- Shoreland zone included for portion rated moderate/high value.

Adding Shoreland Zone



Buffer base layers

- Streams – 75 feet on both sides
- Other resources – 250 feet
- Check local ordinance for variations

Identifying Districts

Cut buffers and change attributes:

- Stream Protection - only streams zoned
- Resource Protection - most restrictive, characteristics listed in Guidelines, most data based, others not
- Limited Residential - default district
- General Development, CFMA - existing industry
- Limited Commercial District - mixed uses

Depicting Districts

Change hierarchy of attributes

- General Development I, and CFMA
- Limited Commercial District
- Resource Protection
- General Development II (not RP exempt)
- Limited Residential (default)
- Stream Protection (does not occur inside another district or zoned resource)

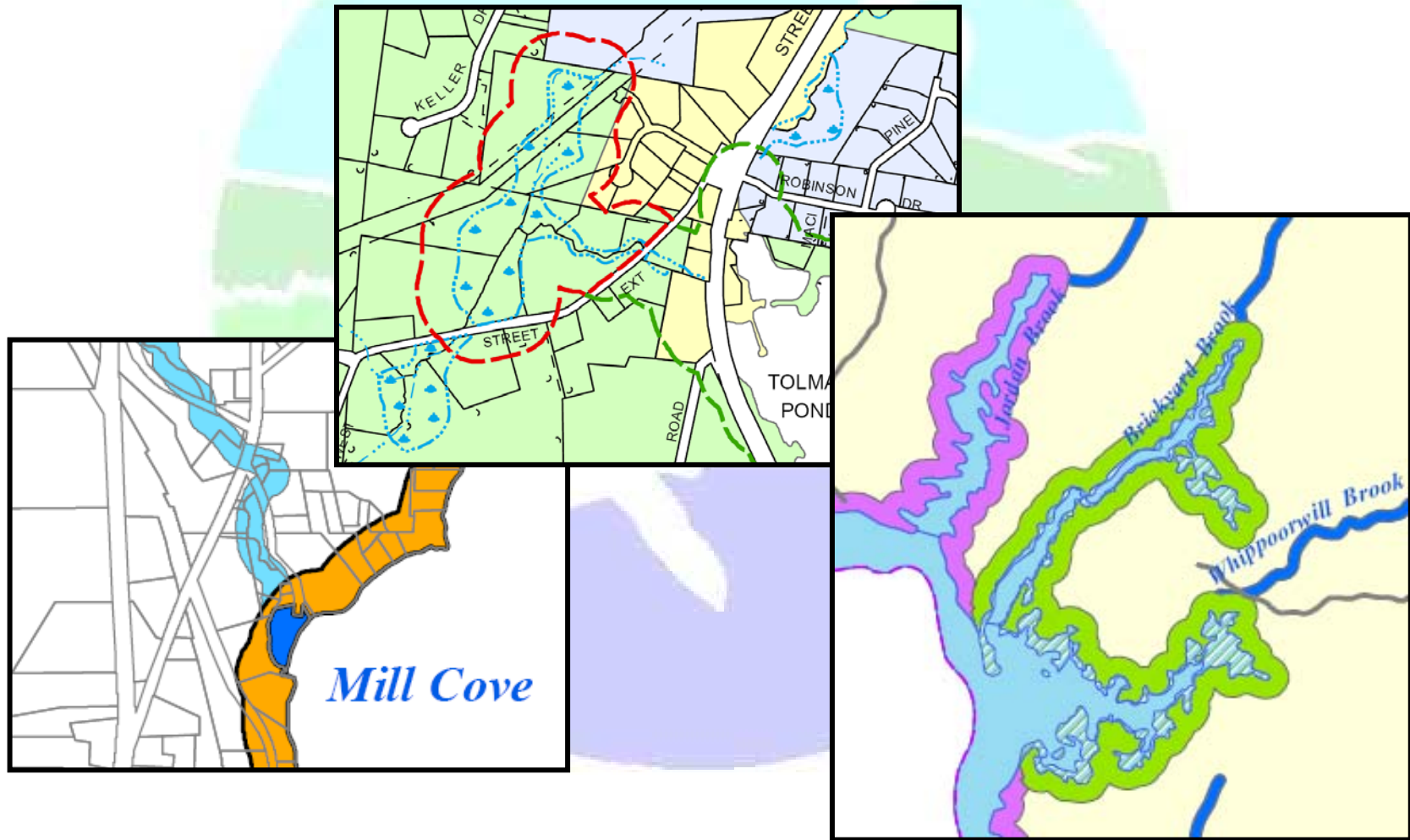
Slide 15

MW1

Add picture

MikeW, 3/9/2010

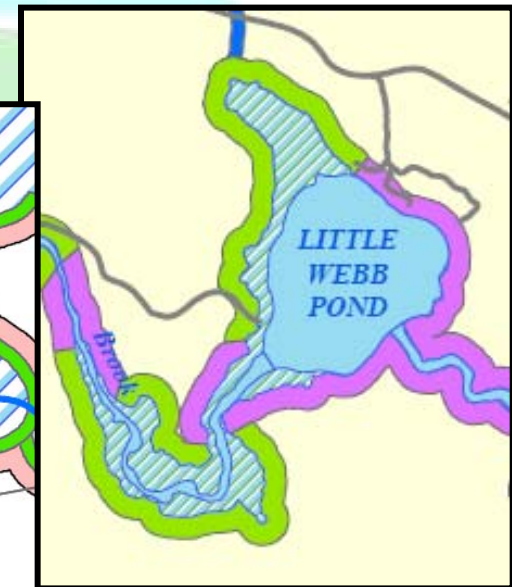
Depicting Districts - Examples



Common Problems

- Stream lines interrupted by wetland areas or small ponds need to be connected, buffered.
- Wetlands associated with great ponds, rivers or subject to tides need to be included as part of the zoned resource.
- Narrow wetland areas may not have to be zoned as freshwater wetlands (check with Stephenie).

Common Problems - Examples

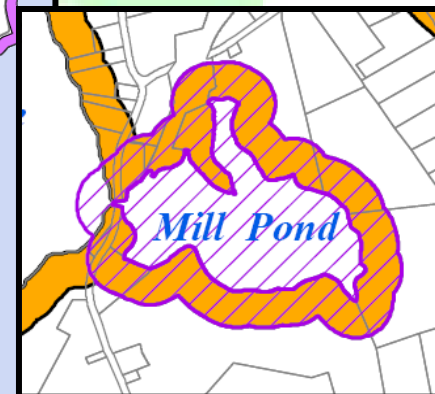
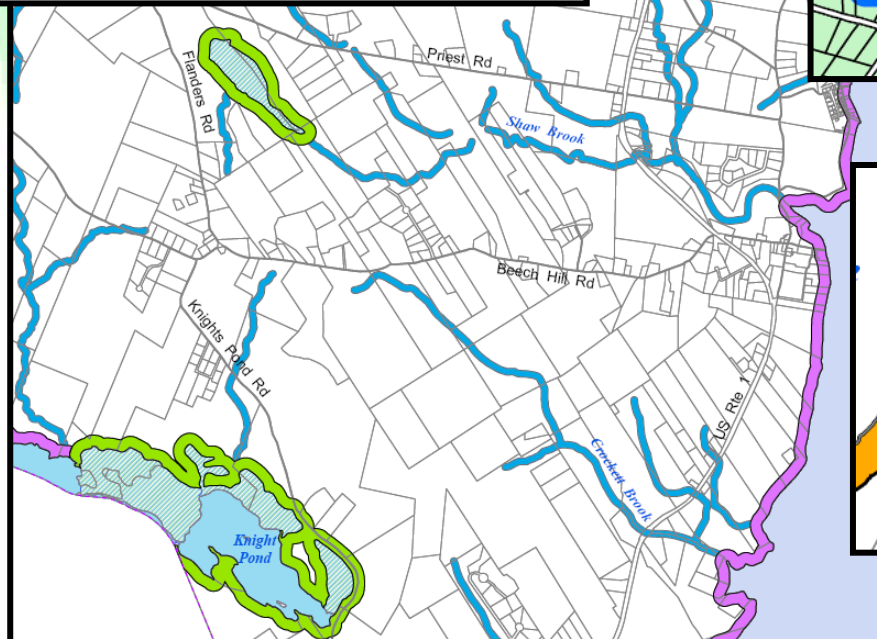
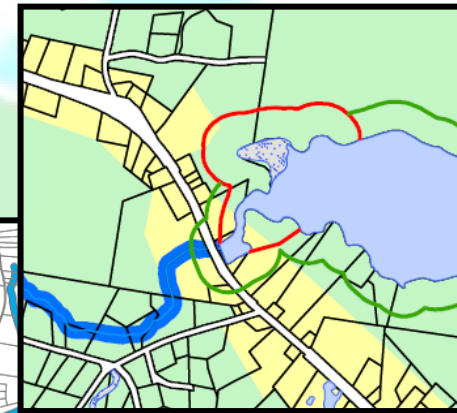
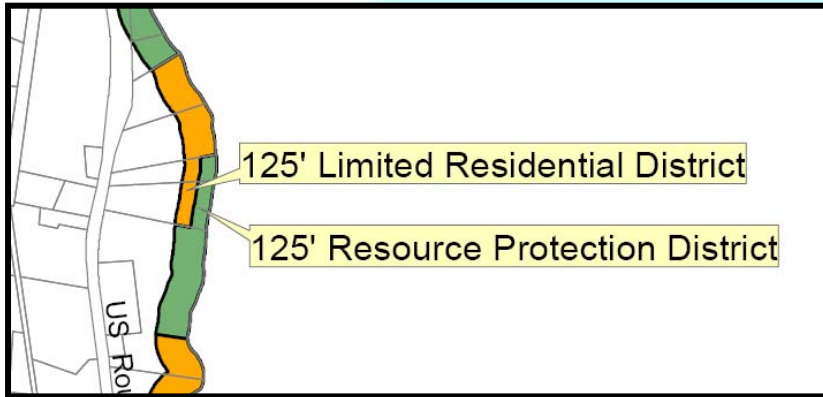


Common Variations



- District titles, overlay or split districts
- More inclusive resource definitions
 - forested wetlands included in zoned wetlands
 - all perennials zoned SP
- More inclusive District criteria
 - Drinking water sources are RP
 - Scenic areas are RP
 - Certain habitats are RP

Common Variations - Examples



Future Training?



Is there interest in a roundtable or workshop?

Contact Information:

Stephenie: stephenie.maclagan@maine.gov

Mike: mike@dirigospatial.com