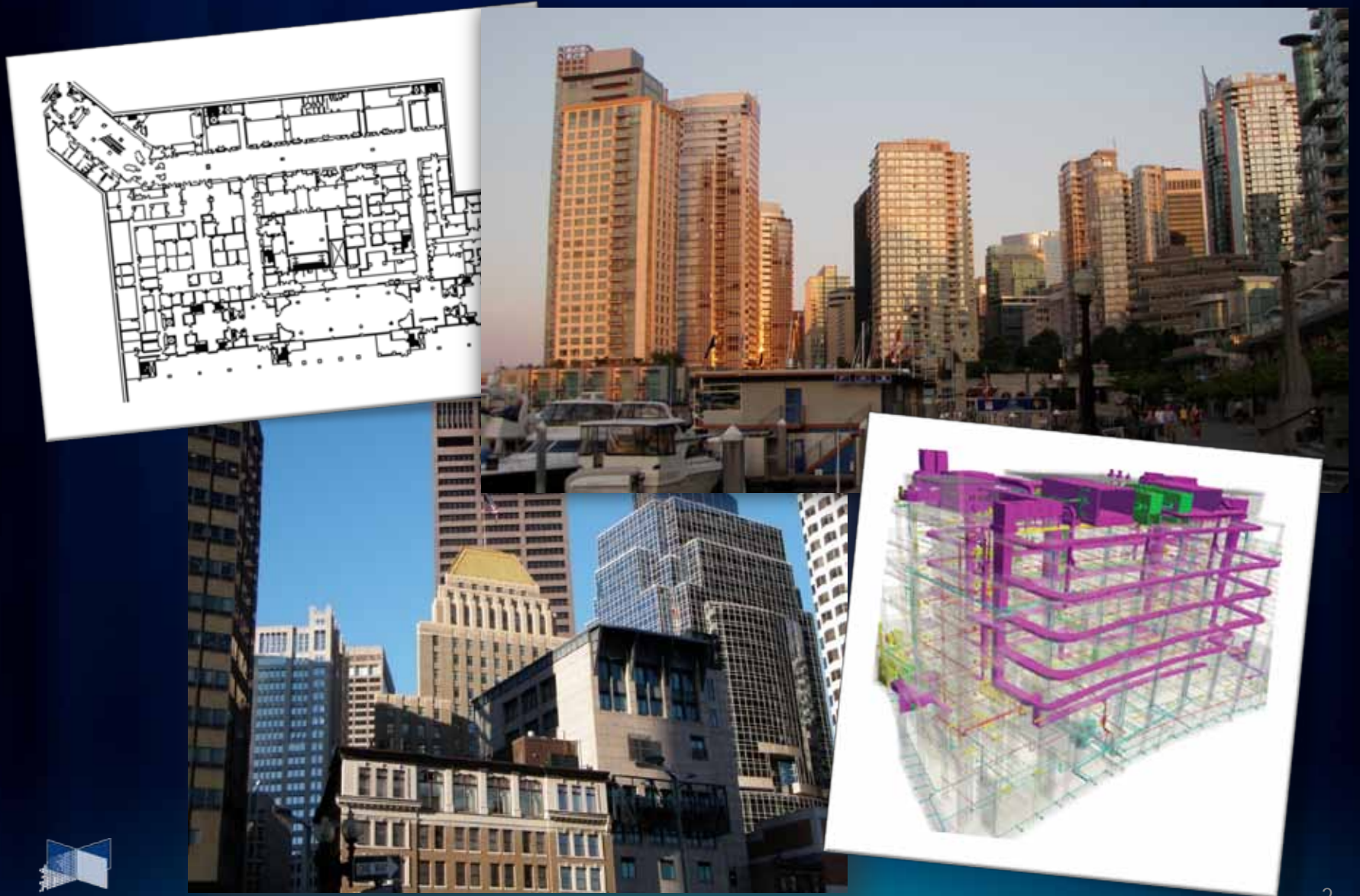


# Ignite Spatial Bowdoin College

November 1, 2011

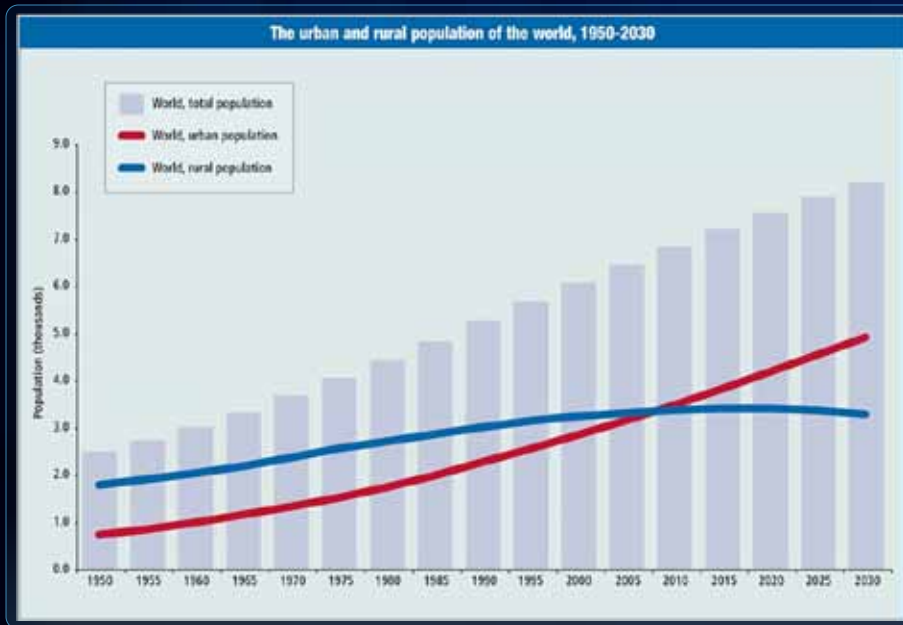


# Why is PenBay Focused on GIS for Facilities?



# Why is this important?

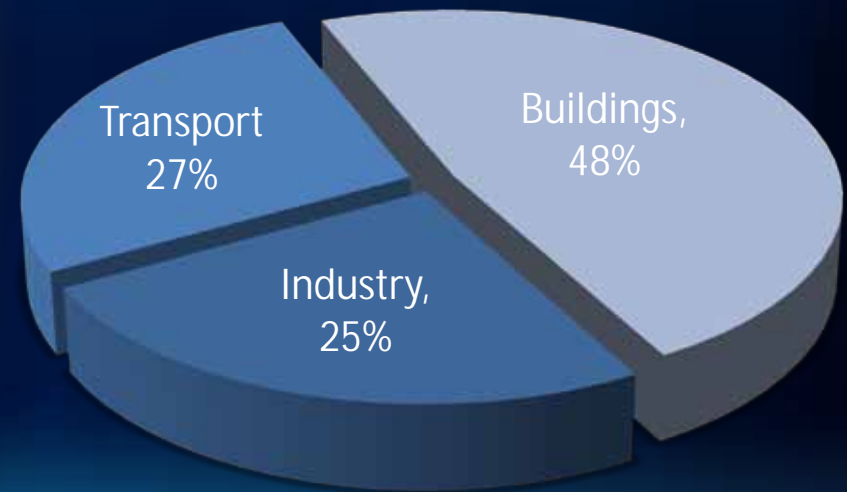
## Global Urbanization



Source: World Bank

## Sustainability

### U.S. Energy Consumption



# Facilities represent...

- Money...
- Expense...
- Sustainability...
- Security...



Yet, buildings remain absent from GIS



# By bringing buildings into GIS...



# We extend the geographic scale

## from landscape to asset



# GIS is the right and only technology



# What is GIS for Facilities?

# Complete Facility Life Cycle



# GIS for Facilities

## Complete Facility Lifecycle

✓ Site Analytics

✓ Design &  
Construction

✓ Space &  
Occupancy

✓ Operations &  
Maintenance

✓ Public Safety  
and Security

✓ Sustainability

## Value of GIS

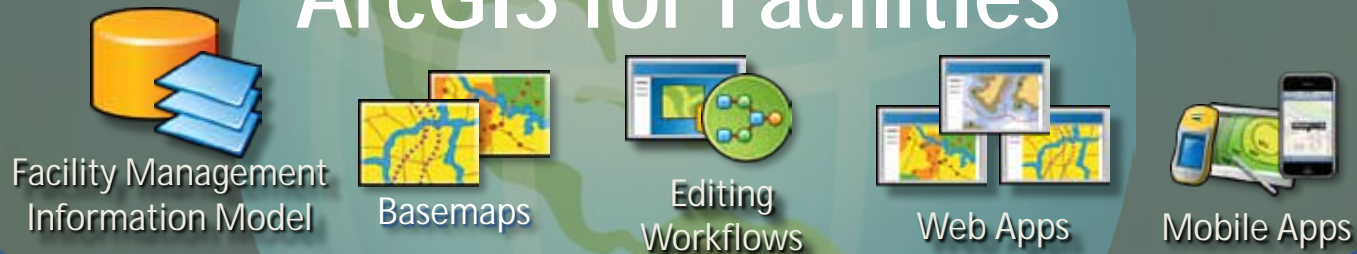
PenBay InVision Solution Suite<sup>SM</sup>

Esri Technology

# GIS for Facilities Foundation

## PenBay's InVision Solution Suite<sup>SM</sup>

### ArcGIS for Facilities



### ArcGIS Core

# GIS for Facilities Foundation

## InVision InSite<sup>SM</sup>

- Site Selection
- Design & Construction
- InVision Portal<sup>TM</sup>
- InVision Data<sup>SM</sup>

## InVision FM<sup>SM</sup>

- Space & Occupancy
- Operations & Maintenance
- InVision Portal<sup>TM</sup>
- InVision Data<sup>SM</sup>

## InVision Secure<sup>SM</sup>

- Public Safety
- Security
- InVision Portal<sup>TM</sup>
- InVision Data<sup>SM</sup>

## InVision Sustain<sup>SM</sup>

- Sustainability
- InVision Portal<sup>TM</sup>
- InVision Data<sup>SM</sup>

## ArcGIS for Facilities



Facility Management Information Model



Basemaps



Editing Workflows



Web Apps



Mobile Apps

## ArcGIS Core

# ArcGIS for...

## ArcGIS for Facilities



Facility Management  
Information Model



Basemaps



Editing  
Workflows



Web Apps



Mobile Apps

ArcGIS for Facilities is a potential component of every "ArcGIS for..."

ArcGIS for  
Business

ArcGIS for  
State/Local

ArcGIS for  
Federal

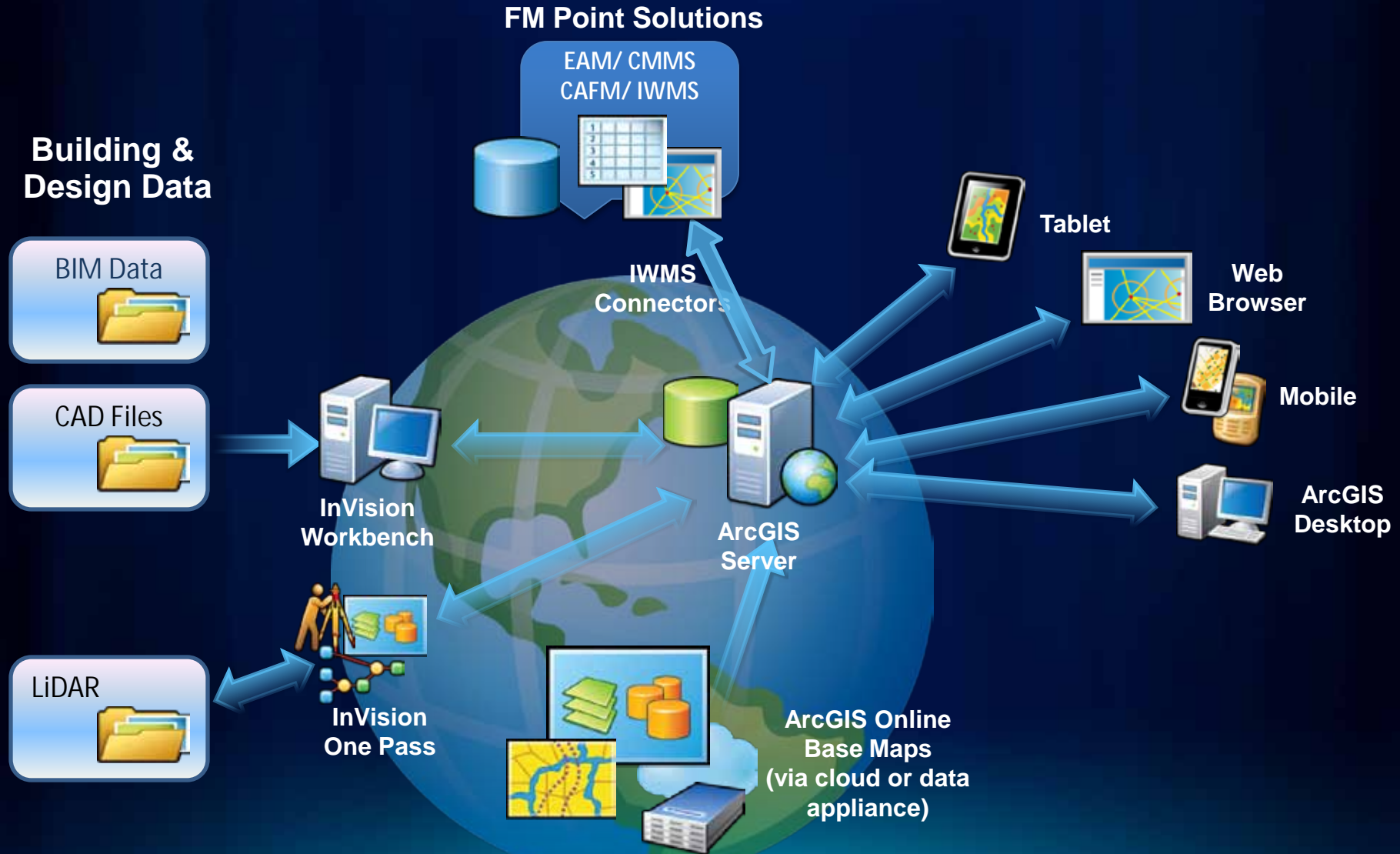
ArcGIS for  
Education

ArcGIS for  
Public  
Safety

*Matrix Approach*

# InVision Products

## Technical Architecture



# Flexible Deployment Options

Clear



Partly Cloudy



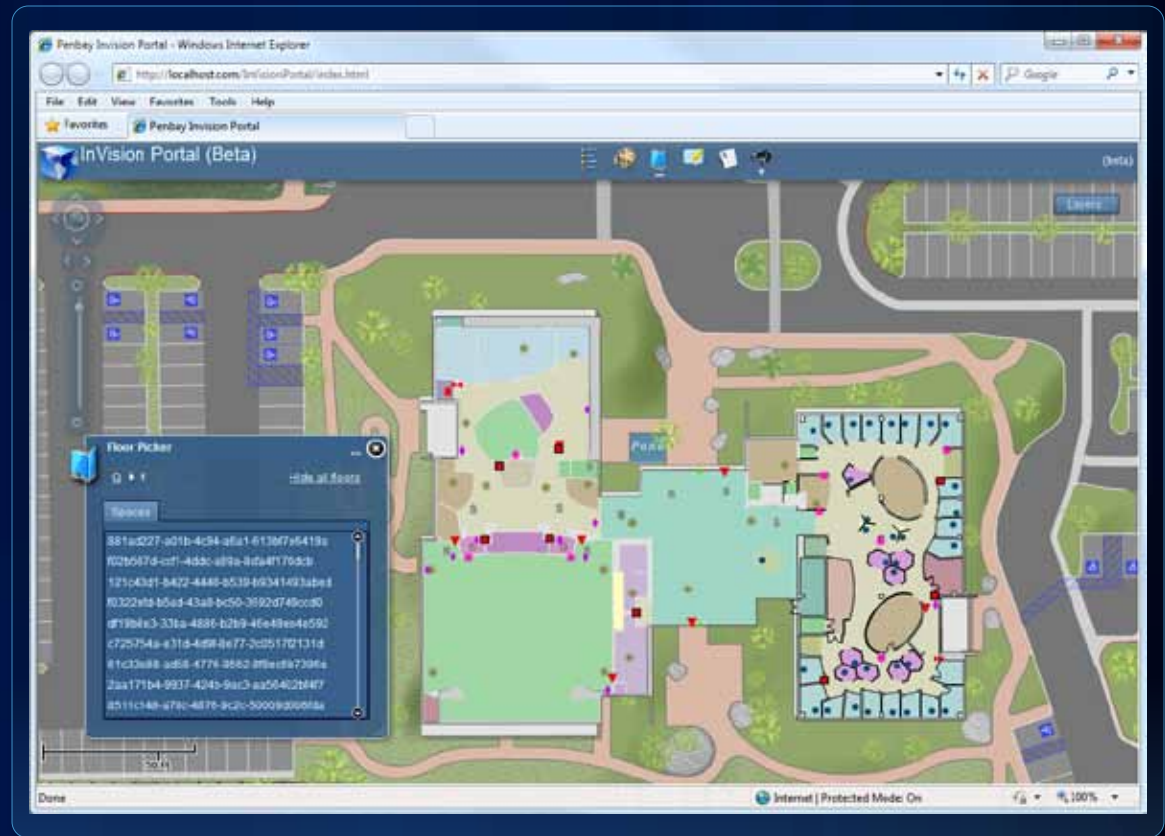
Cloudy



*... ArcGIS for Facilities can be Implemented on premises,  
in the cloud, or a combination of both*

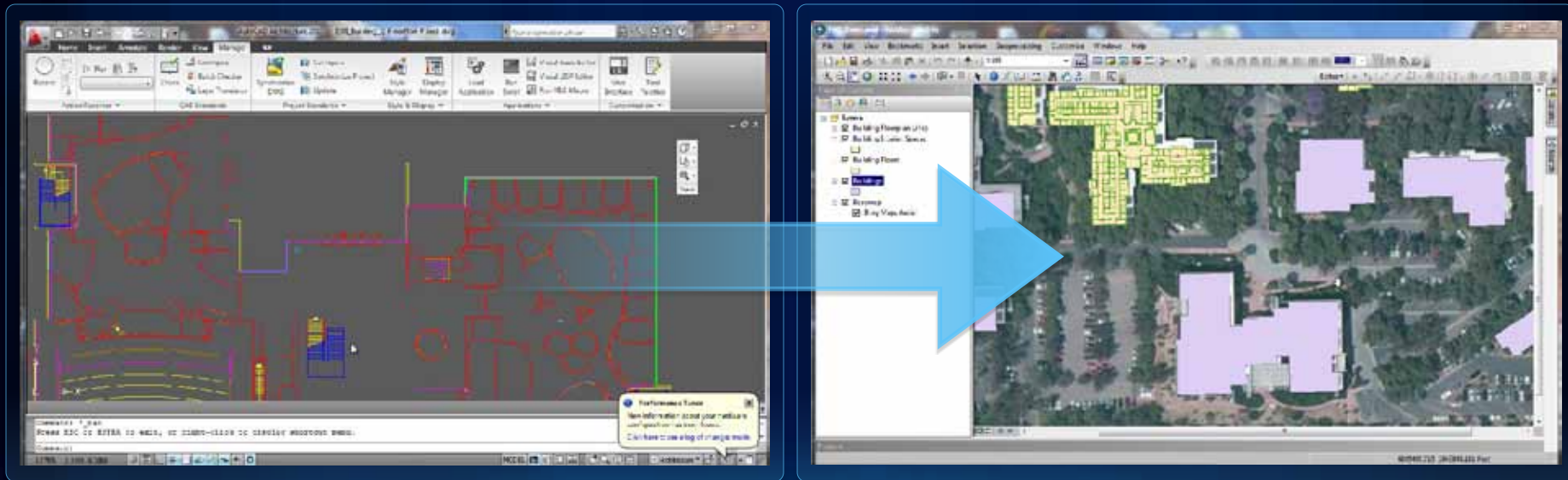
# InVision Portal™

- Core viewer for spatial data
- Lightweight
- Web-based
- Built on ArcGIS Viewer for Flex
- Maps and Apps



# InVision Data<sup>SM</sup>

- Data is King
- Harvest, Convert, Create, Maintain
- InVision WorkBench<sup>SM</sup> – Data Conversion
- InVision OnePass<sup>SM</sup> – Data Collection



# UNCC Case Study

## Challenge

Needed integrated view of their facilities for campus-wide workflows and assets

## Solution

An enterprise GIS platform for Esri-hosted ArcGIS map services integrated with ARCHIBUS Web Central and UNCC's Building Automation System



# InVision Secure<sup>SM</sup>

- Bringing the building into the COP
- Visualize the Common Operational Picture across facility portfolio
- Map risks and mitigation simultaneously
- Easy-to-access, accurate floor plans for first responders
- Create better evacuation plans



# InVision Secure<sup>SM</sup>

