



DELORME

We Bring Technology Down to Earth™



DeLorme Headquarters, Yarmouth, Maine

photo © Jeffrey Stevenson

Ignite Spatial Maine

1. About DeLorme
2. The new DeLorme inReach
3. InReach on the Grand Teton
4. GIS, XMap, and Forms
5. DeLorme – Future Solutions:
Field Data Collection



Chip Noble

Product & Design Manager

chip.noble@delorme.com

About DeLorme

Founded in 1976 by David DeLorme

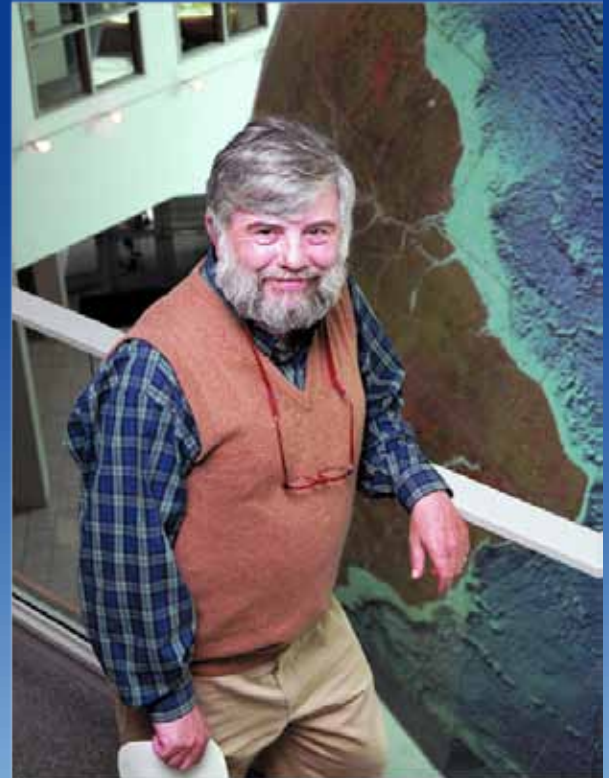
- § Topographic map books from the start
- § Digital maps since 1991
- § GPS products since 1995

U.S.-Based

- § Product design and engineering
- § Customer support



A Service-Disabled,
Veteran-Owned Small
Business (SDVOSB)



About DeLorme

Over 30 Years of Breakthrough Innovations

- § Topographic maps of an entire state in handy book form
- § Voice-guided GPS navigation
- § Aerial imagery on a handheld GPS
- § Navionics maps layered with topo maps and aerial imagery
- § Most recently, the first handheld GPS to send text messages via satellite

1

DeLorme inReach

DeLorme inReach Two-way Satellite Communicator

- § Bi-directional communication
- § Near real-time confirmation
- § Messaging, tracking, emergency SOS
- § Operate standalone
- § Pair with DeLorme PN-60w or Android



Earthmate PN-60w & inReach

Earthmate PN-60w inReach pairing

- § Full handheld GPS functionality
- § Messaging, tracking, emergency SOS
- § Send and receive to friends and family
- § See message locations from other users



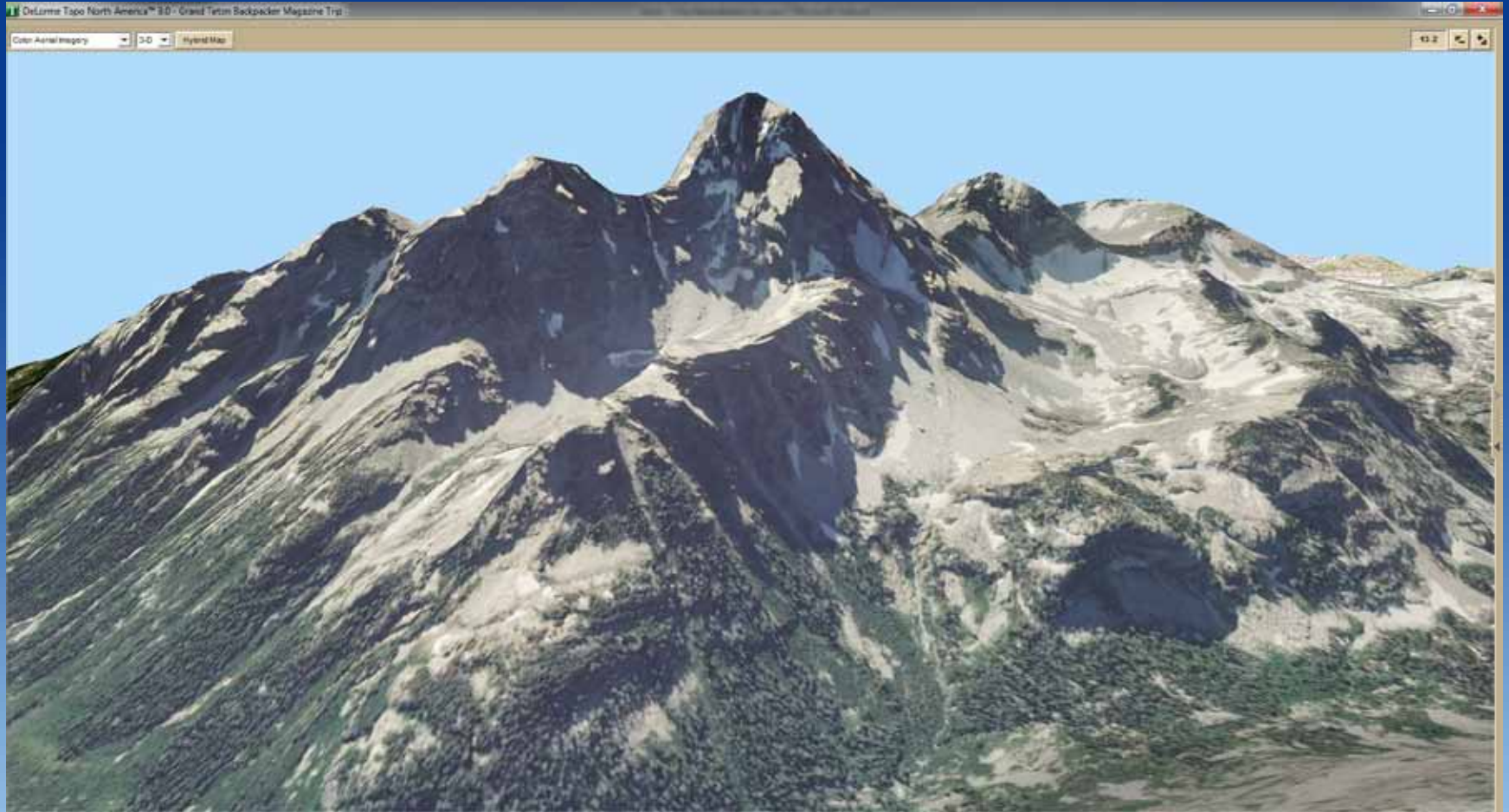
DeLorme Android App & inReach

Android application inReach pairing

- § Messaging, tracking, emergency SOS
- § Send and receive to friends and family
- § See message locations from other users
- § Maps for North America included
- § Map Library available



Grand Teton Climb



Grand Teton Climb

Sep 19, 2011 12:53 PM (*Chip*)

At Lupine Meadow trailhead getting ready to climb the Grand Teton!

Sep 19, 2011 2:19 PM (*Amy*)

Good Luck! Have fun & breath deep!

Sep 19, 2011 2:34 PM (*Chip*)

Thanks Amy! Everything is going well!



Grand Teton Climb

Sep 19, 2011 6:18 PM (*Chip*)

Made it to high camp, 11,000 feet! Time for some hot chocolate...

Sep 19, 2011 6:19 PM (*Amy*)

Yeah! Enjoy the hot chocolate!

Sep 19, 2011 6:28 PM (*Chip*)

Thanks! Miss you guys! Love you!



Grand Teton Climb

Sep 21, 2011 7:34 AM
Starting the climb to the
summit of the Grand Teton!

Sep 21, 2011 10:50 AM
Above 13,000!

Sep 21, 2011 10:59 AM
On the Exum Ridge!



Grand Teton Climb

Sep 21, 2011 7:34 AM

Standing on the summit of the
Grand Teton, breathtaking!
Thanks to Big City Mountaineers,
Backpacker Magazine, and
DeLorme for this amazing
opportunity!



Grand Teton Climb

“Good luck! I’m on the other side in Idaho.” –*Twitter follower*

“Dear Chip, we’re following you from Italy, Abruzzi mountains! Wishing you all the best for a nice climb! – Klaus” –*Twitter follower*

“Abby is having lunch with us. She says you are a good climber. We love you.” –*My mom*

“Doing good so far. I would love to meet you at the top With bacon and whiskey, but alas I have to be at work. How about a box of cookies when you get back?” –*Twitter Challenge responder*

“Really cool to be able to show the girls where you are, which rock are you hiding behind? Get good rest for tomorrow.” –*My sister*

“Wishing you tight ropes, solid footing, and clear skies.” –*Co-worker*

“Great! I hope you had a good time, and I’m glad you’re on your way towards home because we miss you! –*My wife*



Grand Teton Climb

Mozilla Firefox

File Edit View History Bookmarks Tools Help

http://betashare.l...dd81504ab5ec2958

delorme.com http://betashare.delorme.com/Default.aspx?Main%7b%06%7d%2b%40ad81504ab5ec2958

DELORME

Grand Teton Climb

MapShare: [Facebook](#) [Twitter](#)

Auto Pan & Zoom 47

ID	Name	Current Device
•	Chip Noble	DeLorme D1

Map Source: Microsoft Bing Maps | Coordinate System: Decimal Degrees (WGS84)

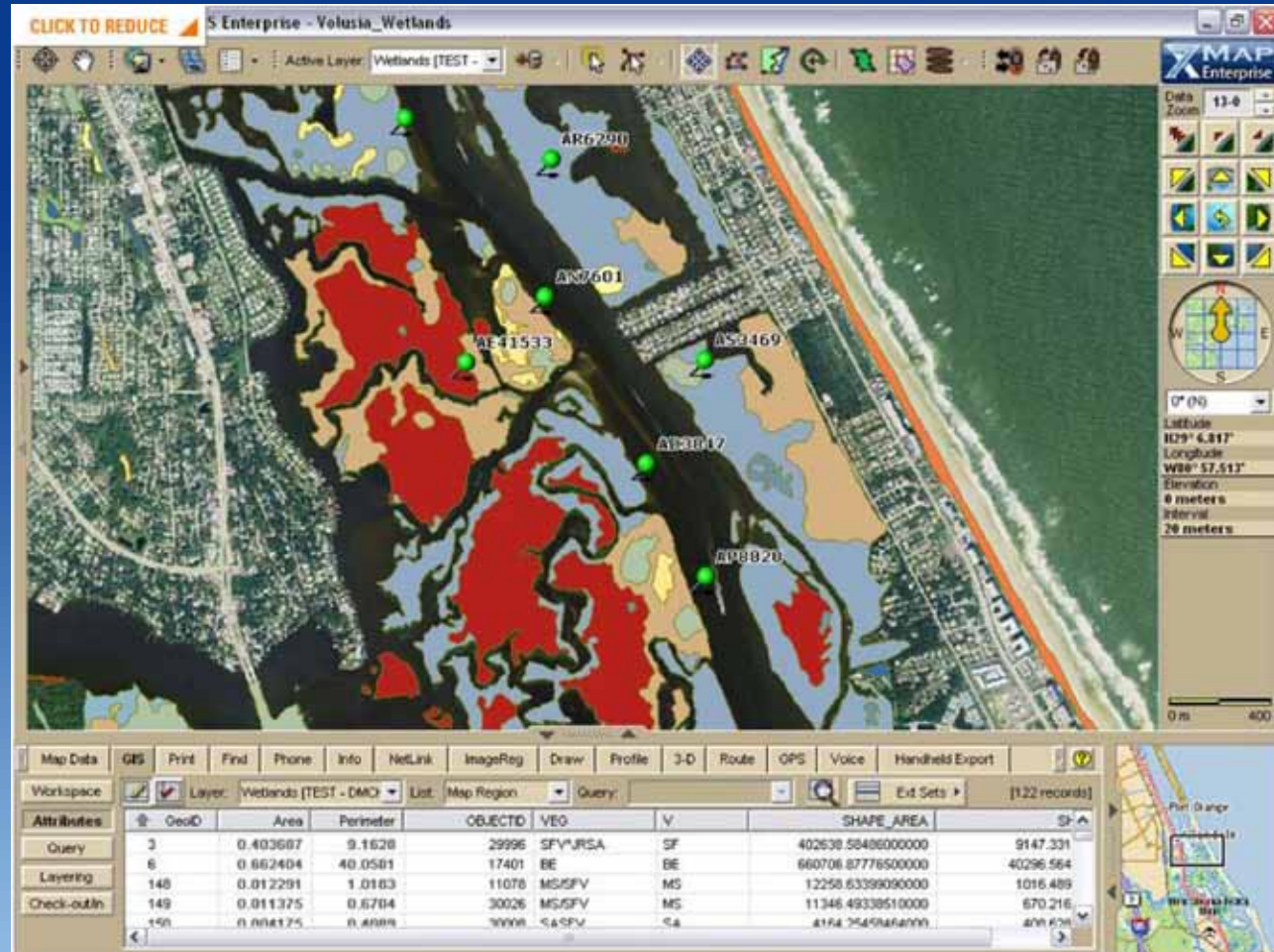
I've joined Big City Mountaineers and Backpacker Magazine on an adventure! Send me a message and I'll reply when I can. Chip Noble, Team DeLorme.

Powered by **GeoPro** Version 1.5.9

XMap – GIS Mapping

XMap is:

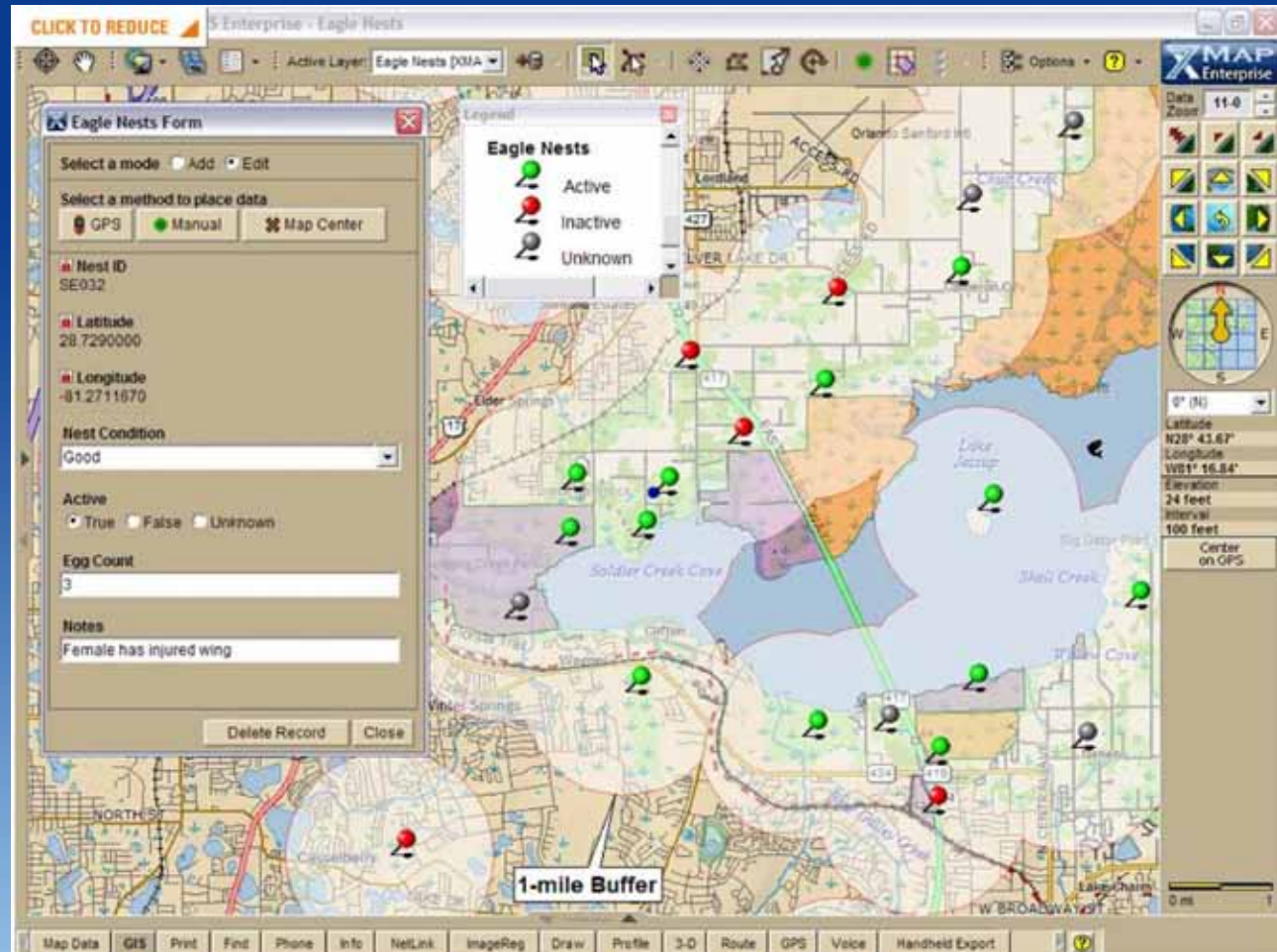
- three-tiered GIS software suite designed to optimize transfer of information between GIS administrators and field personnel.



XMap – Forms

XMap Forms :

- view or edit GIS data layers
- enable field data collection
- GIS data editing capabilities
- display attributes for a selected GIS object in XMap or on the Earthmate PN-60 GPS receiver.



XMap – Forms

Forms are:

- associated with GIS layers in an XMap database
- used to update layers in real time
- transferred to a remote XMap or Earthmate PN-60 user whose work can be later automatically merged with the original data.



DeLorme – Future Solutions

Forms :

- Load GIS layers on Android and PN-60w devices
- Send and receive GIS records with DeLorme inReach
- Update GIS Data with Two-Way Synchronization

New! Introducing XMap 7



Update GIS Data with Two-Way Synchronization [Learn More](#)

DeLorme – Future Solutions

Data Collection Suite:

- XMap GIS - layer management
- Earthmate PN-60 - data collection
- Android Application - data collection
- DeLorme inReach - two-way communication





DELORME

We Bring Technology Down to Earth™



DeLorme Headquarters, Yarmouth, Maine

photo © Jeffrey Stevenson