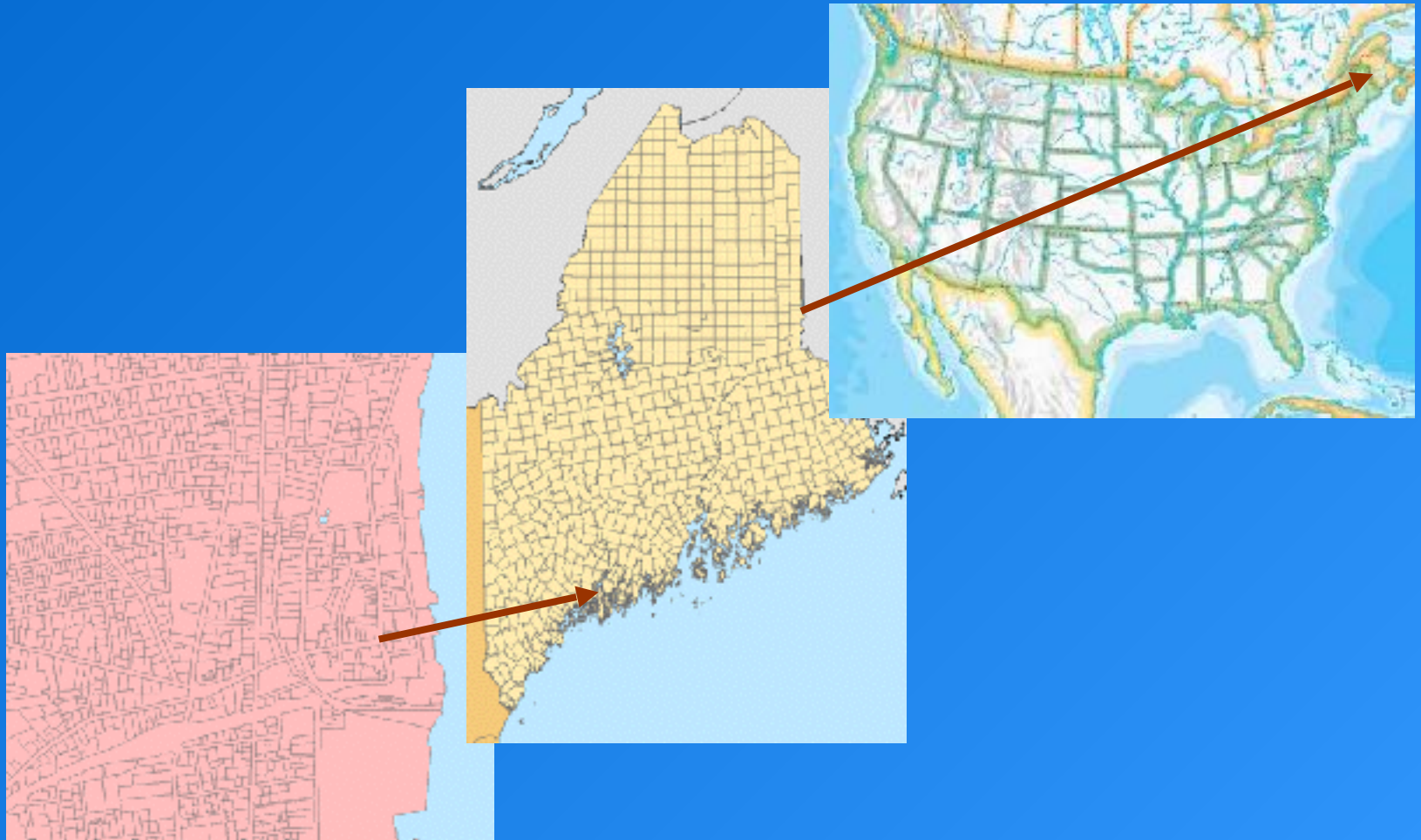


Intergovernmental Data Sharing



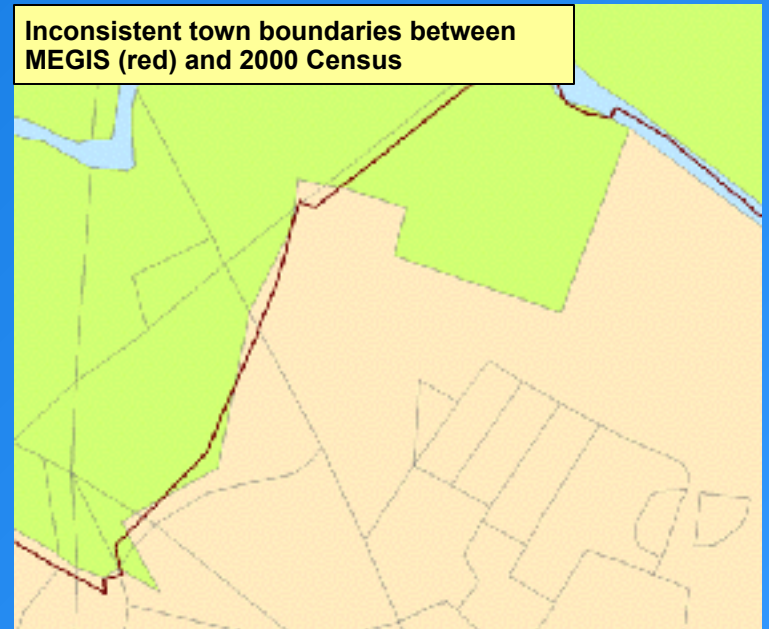
Why bother? Just a lot of extra work, right?

- In most cases, not really very much work at all – just sharing data with MEGIS, who will then share with feds.
- Benefits to towns/counties include that federal data (census data for example) will align with state and local data – makes analysis easier for all of us.
- Funding possibilities – Federal and state funds often available to bring local data in synch with state and federal data.

Funding for data sharing:

- USGS funding for aerial photos, lidar, hydrographic data
- EPA funding for watersheds
- FEMA funding for lidar
- State funding for parcel digitization

Inconsistent town boundaries between MEGIS (red) and 2000 Census



Local – State – Federal data frameworks

- Federal level is the National Spatial Data Infrastructure (NSDI)
- State level is the Maine Geospatial Architecture (MGA), data section
- Local is the business needs of municipalities and counties

NSDI Framework Themes:

- Geodetic Control
- Cadastral
- Orthoimagery
- Elevation
- Hydrography
- Administrative Units
- Transportation

MGA Core Spatial Data:

- All of NSDI, plus
- Structures
- Addresses
- Emergency Response
- Geographic Names
- State Regulatory Data
- Landcover/Imperviousness

Typical municipal data:

- All of MGA, plus
- Detailed cadastral data: parcels, zoning, planning
- Assessors data
- County deeds data
- Detailed infrastructure



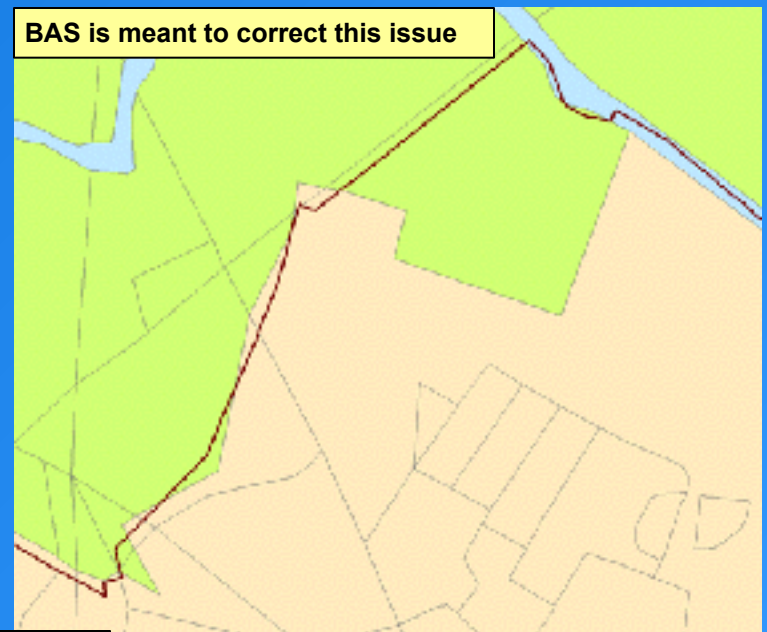
Partnership Opportunity #1 – US Census Boundary & Annexation Survey (BAS)

- Goal is to synchronize Census maps with local town boundaries and roads, for delineation of 2010 census blocks and resulting data products.
- Census Bureau sends maps to towns/counties for town boundary review.
- MEGIS is state-level collection point for town boundary updates in GIS.
- MEGIS feeds updated statewide town boundary layer to Census.
- MEGIS feeds most current E911 roads data to Census.

How to participate:

- Towns should receive BAS letters from Census
- Review town boundary, report any changes to MEGIS as instructed in the letter
- Ignore roads on the map, Census will use E911 for final product
- *MEGIS will incorporate boundary changes where both towns agree, but we will not get in the middle of a boundary dispute*

BAS is meant to correct this issue



NSDI Framework Layer #5 – governmental units

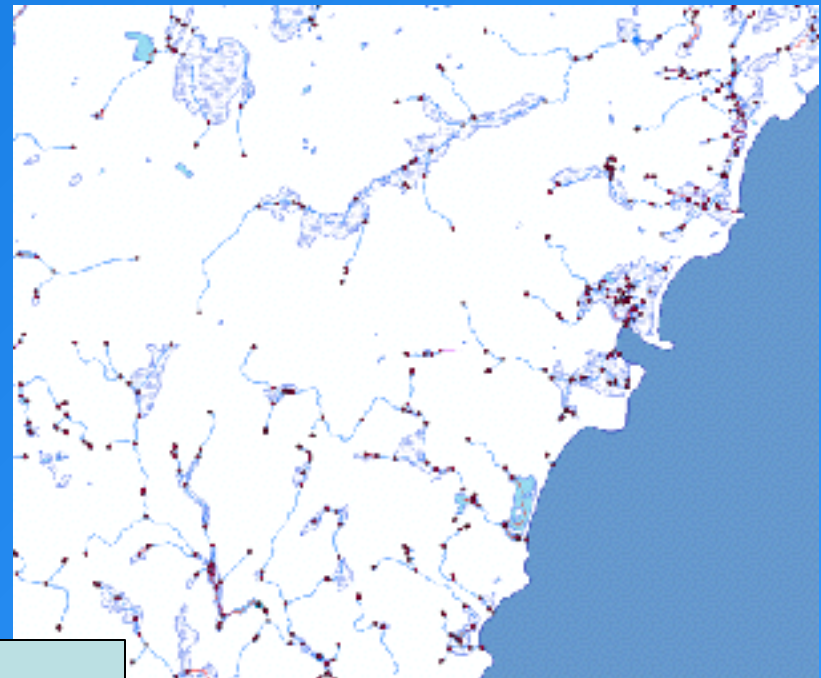
Local-State-Federal Data Sharing

Partnership Opportunity #2 – National Hydrography Dataset (NHD) and Water Boundary Dataset (WBD)

- NHD originally developed with 1:100K scale data, useful at national scale but certainly not for towns.
- NHD ported to 1:24K scale data for Maine in recent year, much better for the local picture, but still not suitable for all.
- NHD now can utilize ‘local resolution’ which is basically 1:5K-1:10K or similar local resolution.
- Watershed Boundaries are now part of NHD and can be updated

How to participate:

- NHD stewardship is guided by a state MOA with USGS. Three individuals oversee all additions/modifications.
- Municipalities/Counties that have better hydrographic data than NHD can provide those data to MEGIS for eventual inclusion.
- Online tool to be deployed soon to assist this, will be announced on the Maine GeoNews list.

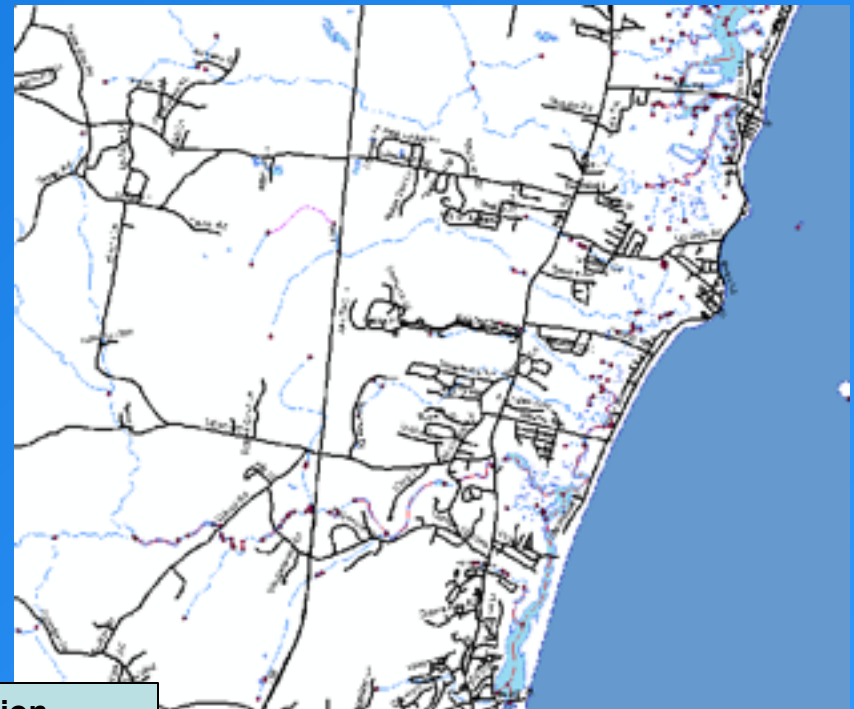


Partnership Opportunity #3 – E911 Roads

- Most towns are already participating
- Town addressing officers provide updates to MEGIS
- MEGIS and MEDOT piloting a new process to unify E911 and DOT roads data
- MEGIS provides data to federal agencies such as USGS, and will be providing data to US Census Bureau for 2010 census.

How to participate:

- Most towns already participating
- If your town already participates, nothing else needed to do
- Work with MEGIS E911 staff 1-800-665-2830



NSDI Framework Layer #7 – transportation

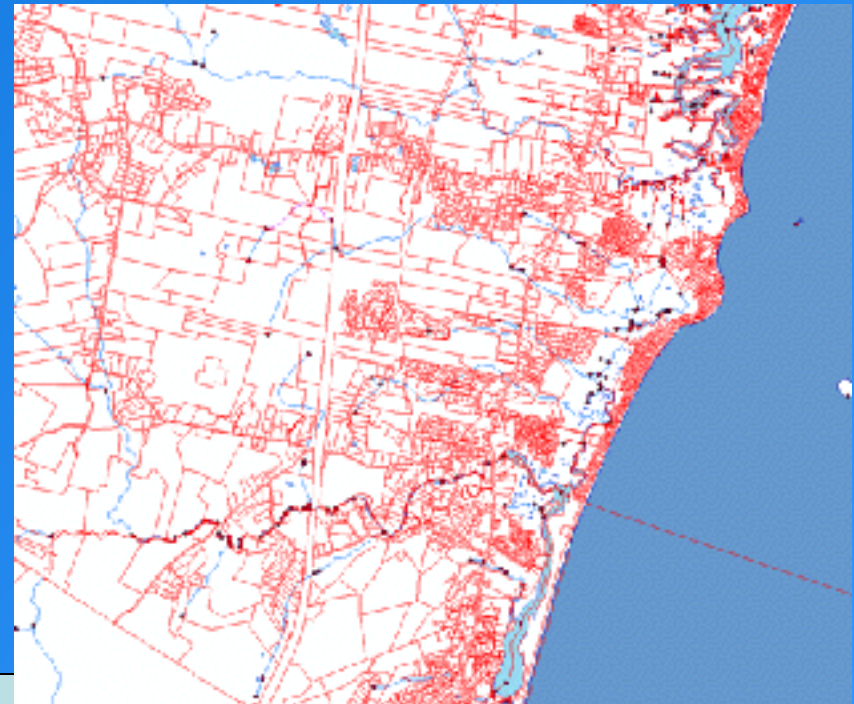
Local-State-Federal Data Sharing

Partnership Opportunity #4 – Parcels/Cadastral Data

- This effort is still in its infancy. Most towns maintain their parcels or tax maps, or have a company do it for them. A few have nothing at all.
- State maintains parcel data in unorganized territories (LURC).
- Counties maintain deeds and transfers.
- How to bring it all together? Benefits for the public are huge.
- Feds are interested in parcels/land ownership data.

How to participate:

- In Hancock County, MEGIS/GeoLibrary have received a federal grant to do a pilot project for integrating data.
- Otherwise, towns can load data into the GeoLibrary portal for sharing (geolibportal.usm.maine.edu). UMM is helping towns do this.
- In the next year MEGIS will be developing an online parcel viewer which any town can use if we have their parcel data.

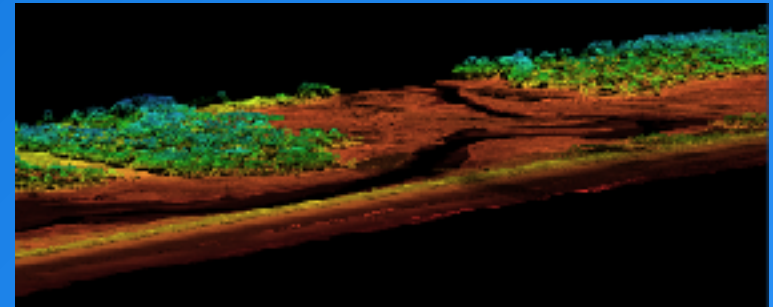


Partnership Opportunity #5 – Imagery and/or lidar

- This effort is well developed and has been used several times.
- 1' and 2' 2003-2005 GeoLibrary orthophotos
- 2006/2007 York and Cumberland county orthophotos
- 2008 Augusta/Manchester photos and lidar
- 2009 Androscoggin County lidar

How to participate:

- Town(s) or county(ies) put together funds for aerial photo or lidar collection.
- Town(s) or county(ies) should talk to their neighbors about collaboration – the larger the area the cheaper the cost.
- MEGIS and GeoLibrary can help spread the word and find cooperators too.
- Engage the USGS liaison (Dan Walters) to look for USGS funding match.



NSDI Framework Layer #2 – digital orthoimagery

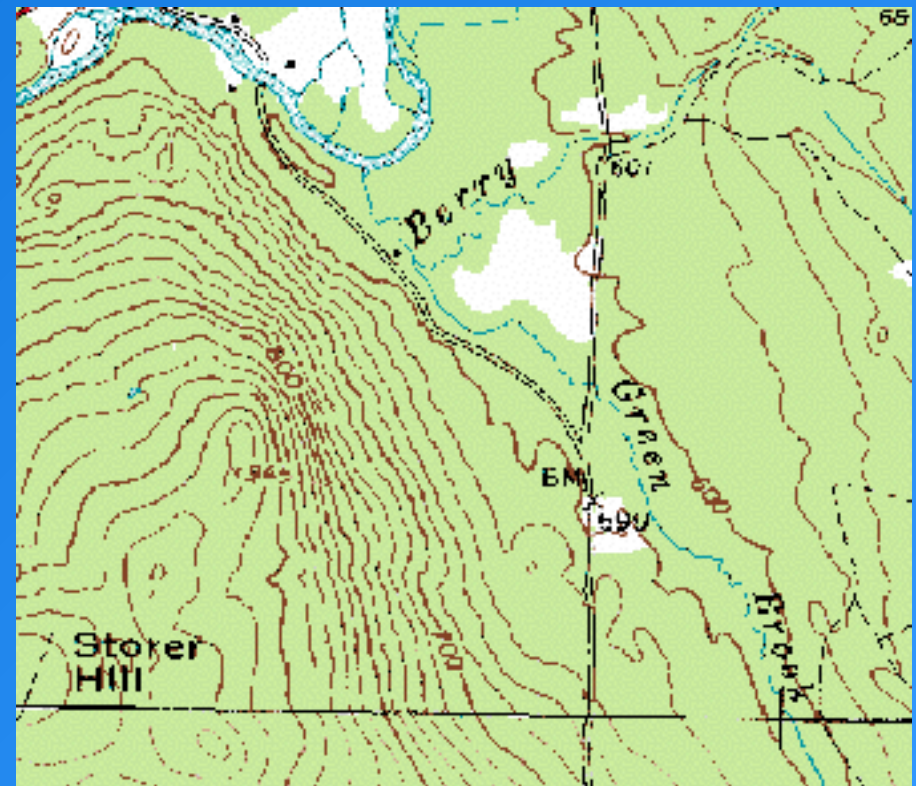
NSDI Framework Layer #3 – elevation

Partnership Opportunity #6 – GNIS (geographic names)

- This effort is well developed and has been used several times.
- Geographic names are vetted by USGS and state / local authority asked for input.
- USGS makes final decision based on their guidelines

How to participate:

- Don't have to do anything – if name changes are offered, USGS will contact the town first, and MEGIS.
- Towns can offer official name changes as long as they comply with USGS guidelines.



That's all folks



Michael Smith
Maine Office of GIS
207-215-5530
michael.smith@maine.gov

